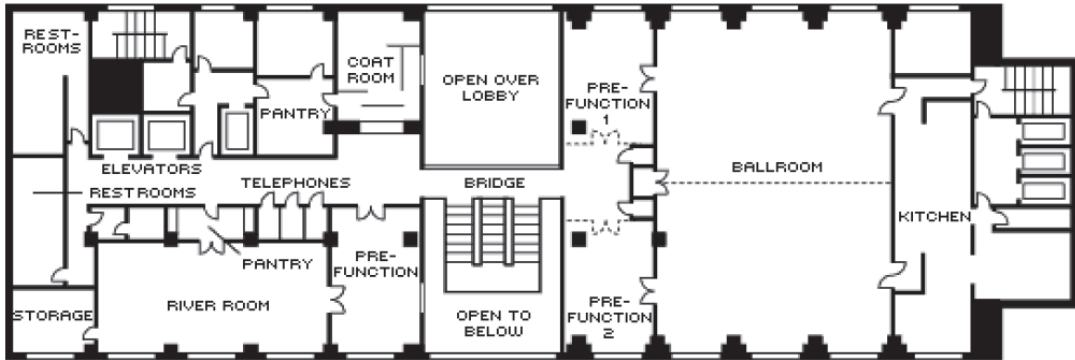
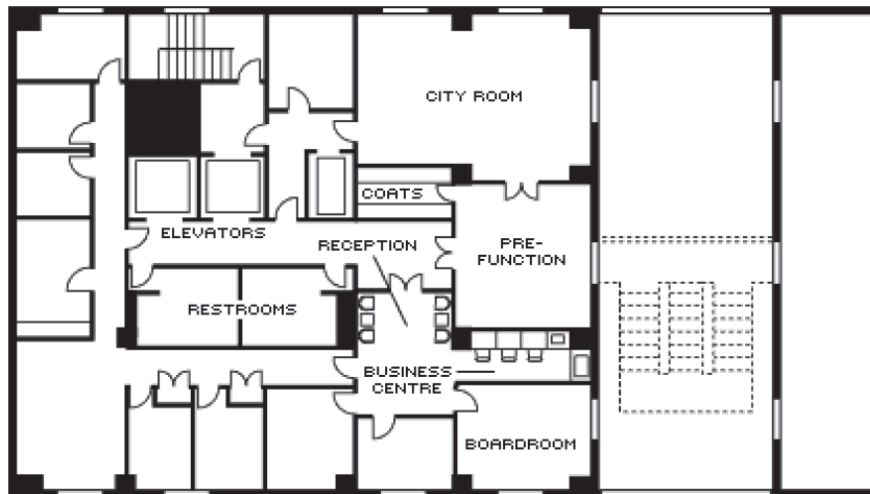




FIRST FLOOR



MEZZANINE LEVEL





**Meeting room capacities:**

Meeting Rooms	Dimensions (metres)	Size (m <sup>2</sup> )	Size (sq.ft.)	Height (m)	Classroom	Hollow Square	U-Shape	Theatre	Reception	Cabaret	Banquet Rounds	Conference/ Boardroom
<b>Ballroom</b>	18.5 x 12.5 m	232 m <sup>2</sup>	2500 sq. ft.	4.7 m	135	66	51	220	280	128	200	50
<b>Ballroom (River /City Side)</b>	9m x 6.25m	116 m <sup>2</sup>	1,250 sq.ft.	4.7m	60	36	21	100	120	64	96	35
<b>River Room</b>	13 x 6.5 m	84 m <sup>2</sup>	905 sq. ft.	2.3 m	36	30	40	80	75	40	72	30
<b>City Room</b>	9.5 x 6 m	56 m <sup>2</sup>	603 sq. ft.	2.8 m	21	18	16	40	40	24	33	22
<b>Ballroom Pre-Function Area</b>	18.5 x 4.5 m	84 m <sup>2</sup>	904 sq. ft.	6.8 m	-	-	-	-	100	N/A	-	12
<b>River Room Pre-Function Area</b>	8 x 5 m	40 m <sup>2</sup>	430 sq. ft.	2.8 m	-	-	-	-	30	N/A	-	12
<b>City Room Pre-Function Area</b>	6 x 5 m	30 m <sup>2</sup>	323 sq. ft.	2.8 m	-	-	-	-	25	N/A	-	8
<b>Boardroom</b>	4.6 x 5.5 m	25 m <sup>2</sup>	272 sq. ft.	2.8 m	-	-	-	-	-	N/A	-	8